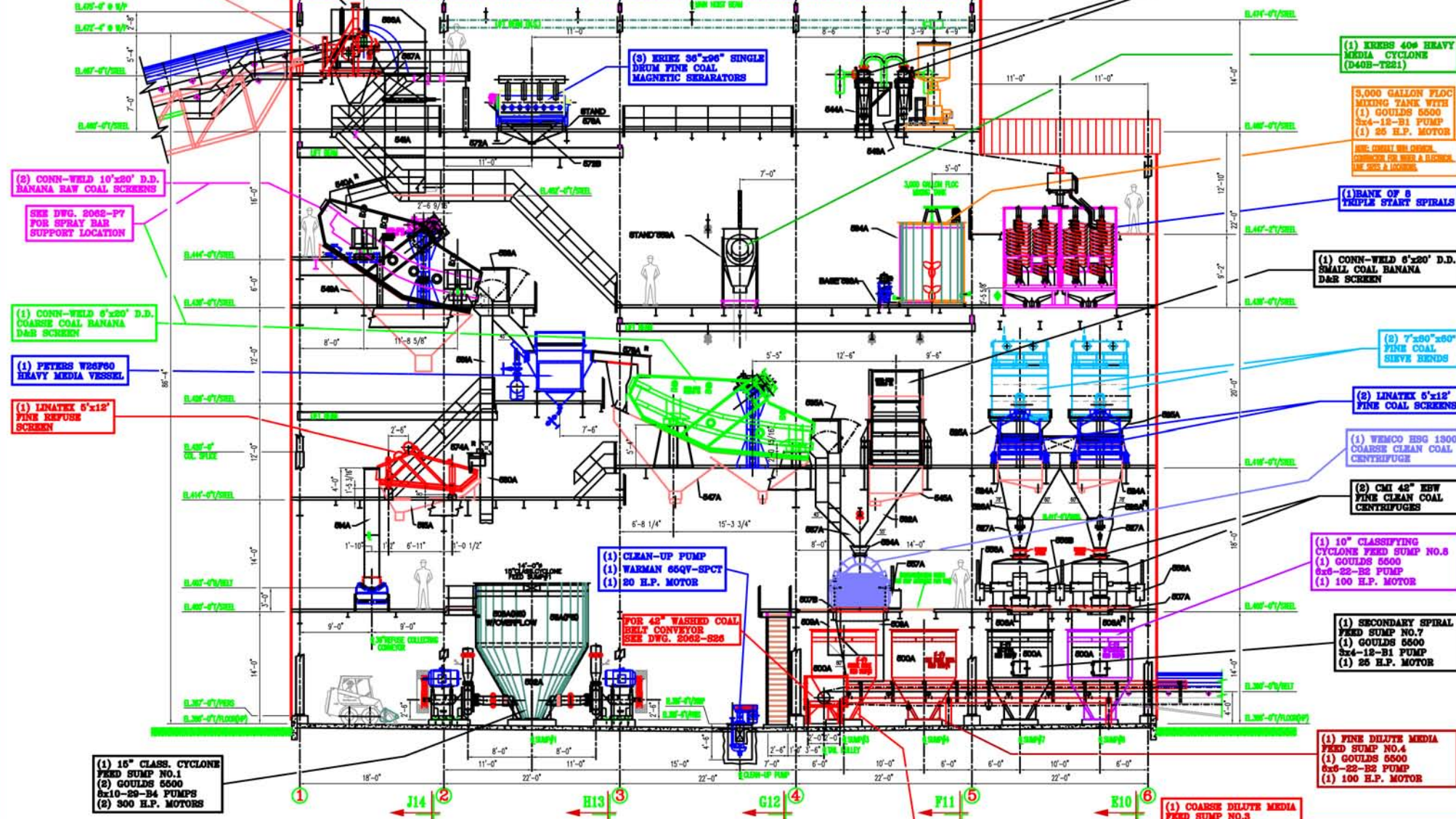


48" PLANT FEED CONVEYOR (1800 TPH)  
SEE DWG. NO. 2160-101 FOR LAYOUT OF BELT

STANDARD - MA.  
STANDARD - PA.  
CHANNELS (4)

(10) KRIBS 15" CLASSIFYING CYCLONES (D16L-B-T12S)



**ELEVATION VIEW @ SECTION 'B7-B7'**  
(BETWEEN COLUMNS B & C)

(1) 15" CLASS. CYCLONE FEED SUMP NO.1  
(1) GOULDS 6500 8x10-22-B4 PUMPS  
(2) 500 H.P. MOTORS

(1) CLEAN-UP PUMP  
(1) WARMAN 66QV-SPCT  
(1) 20 H.P. MOTOR

FOR 48" WASHED COAL BELT CONVEYOR SEE DWG. 2062-826

(1) FINE DILUTE MEDIA FEED SUMP NO.4  
(1) GOULDS 6500 6x8-22-B2 PUMP  
(1) 100 H.P. MOTOR

(1) SECONDARY SPIRAL FEED SUMP NO.7  
(1) GOULDS 6500 3x4-12-B1 PUMP  
(1) 25 H.P. MOTOR

(1) 10" CLASSIFYING CYCLONE FEED SUMP NO.6  
(1) GOULDS 6500 6x8-22-B2 PUMP  
(1) 100 H.P. MOTOR

(2) CMI 42" FWF FINE CLEAN COAL CENTRIFUGES

(1) WEMCO E83 1900 COARSE CLEAN COAL CENTRIFUGE

(2) LINATEX 5"x12" FINE COAL SCREENS

(2) 7"x80"x60" FINE COAL SIEVE BENDS

(1) CONN-WELD 6"x20" D.D. SMALL COAL BANANA D&S SCREEN

(1) BANK OF 8 TRIPLE START SPIRALS

3,000 GALLON FLOC MIXING TANK WITH  
(1) GOULDS 6500 3x4-12-B1 PUMP  
(1) 25 H.P. MOTOR  
SEE DWG. NO. 2062-826 FOR LAYOUT OF BELT & SCREEN. SEE 2062-826A FOR 25 H.P. MOTOR.

(1) KRIBS 40" HEAVY MEDIA CYCLONE (D40B-T21)

(1) COARSE DILUTE MEDIA FEED SUMP NO.3  
(1) GOULDS 6500 6x8-22-B2 PUMP  
(1) 100 H.P. MOTOR

RELEASED FOR ERECTION  
W.R.R. 15-11-09 11:01 AM - J.M.P.